



General Information

A Guide to the MUZA Kawasaki Symphony Hall



Access

Easy access from anywhere
in the metropolitan area!

- 17 min. from Tokyo station
JR Tokaido Line
- 30 min. from Shinjuku station
JR Yamanote Line-Tokaido Line
- 8 min. from Yokohama station
JR Tokaido Line
- 13 min. from Haneda International Airport
Keikyu Line
- 85 min. from Narita International Airport
JR Narita Express- Tokaido Line



2 min. walk from JR Kawasaki station [central exit (west)]

8 min. walk from Keikyu Kawasaki station

i Tourist Information Center
“Kawasaki Kita Terrace”
“atré” 3rd floor (north exit passage of
JR Kawasaki station)

Open Mon.-Fri. 9:00 am - 8:00 pm,
Sat./Sun./Holidays 9:00 am - 7:00 pm

🍴 Restaurants & Cafes

Facilities



Cloakroom 1F

Please check your coat and
large luggage at the cloakroom
on the 1st floor.
Please put your umbrella in
the umbrella stand provided.

Gift Shop “PRELUDE” 1F

This is a popular shop
that has a wide variety of
music- inspired goods.
It is an excellent place to buy
a souvenir for yourself, for a gift for that special someone.



Bar 2F

Our bar has a selection of glass wines (red, white and
sparkling), beer, coffee
and tea.



Nursery Service 1F

English Service Available

A fee-charging spacious nursery
service (fully equipped with
toilettes for children) is available
for those guests attending a performance hosted by MUZA.
Note that this service only for children age 12 and under.
Please make an application no later than 1 week prior to
the event.

Inquiry: @Mothers
Tel: 0120-788-222 (Domestic)
10:00 am-Noon & 1:00 pm-7:00 pm (Mon.-Fri.)



Salzburg Section 2F

This is a corner dedicated
to Salzburg, Austria,
the city of music.
It is Kawasaki city's sister city.



Arts & Autographs 2F 3F 4F

The hallways of respective floors are decorated with
the autographs of those performers who have appeared on
the MUZA stage. In addition, many art works such as
“Sky Walk” (Bar, 2F), by the artist Taro Okamoto, Mucha's
replica posters (Bar, 2F), and
some sculptures (2F-4F)
produced by Japanese artists.



Wheelchair Spaces Available

Please make a reservation at your earliest convenience.
(Refer to the back side.)

Multipurpose Toilet Available 2F



Services & Manners

- For Those Guests First Visiting Event -

Q Is there any age restriction?

Many concerts allow “Elementary School Students or Older”
to enter the hall. Please confirm the information on your
event as some events grant the admittance to everybody and
some events only grant entry to children 4 or older.
A fee-charging nursery service (for babies/children being 0 or
older) is also available. (→See “Nursery Service”)

Q Is there any dress code?

There is no dress code unless otherwise noted for an event.
It is advised that you bring a jacket or something similar as it
might get cold in the hall.
A blanket rental service is also available.

Q If I am late for the concert, is it all right for me to enter the hall during the performance?

You are not allowed to enter once the performance
has started because your footsteps would echo in the hall.
Our receptionist will guide you to your seat at intermission
or another break.

Q A person accompanying me will not make it in time for the concert. Is it OK to leave his/her ticket with your staff?

Yes. We will keep his/her ticket at the reception desk located
near the entrance of the hall.
Please talk to a friendly receptionist for assistance.

Q Can I give a present to the performers?

Please leave your present and/or flower bouquet at the
“Flower Bouquet Reception Desk” located in the lobby.



How to choose your seats

A Guide to the MUZA Kawasaki Symphony Hall



No photography/filming/recording



No eating/drinking in hall




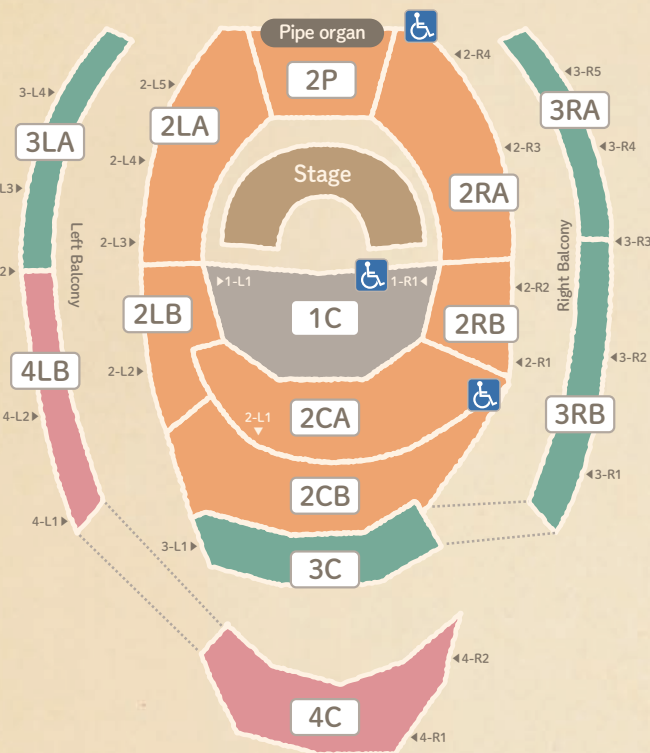
Please refrain
from talking during the performance



Switch off your mobiles
(those producing sounds and/or light)

Let's find your favorite seats!

[e.g.]
1C =seating block number
 ◀1-L1 =door number
 Wheelchair spaces are in 1C, 2CA and 2RA.
 A caretaker can sit next to the person in the wheelchair.



MUZA Kawasaki Symphony Hall uses the “Vineyard Style.” This means that the audience completely surrounds the stage. The hall is designed in a way that allows the audience to be able to enjoy the beautiful music no matter where they sit. People’s experiences will differ depending on where their seats are.

This hall was opened on Thursday, July 1st, 2004
 Number of seats: 1,997 including 10 wheelchair spaces.

Features of MUZA Kawasaki Symphony Hall

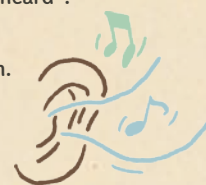
Real Sense of Being There

The seats around the stage make you feel like you are close enough to make eye contact with the performers. Surprisingly, the seats on the second floor give the audience a similar experience.



Clear Sound Quality

MUZA’s room acoustics have a reputation for, “enabling every single sound source to be heard”. The clear sounds of the music will echo through you and leave a lasting impression. MUZA’s sound quality has a great reputation with conductors and orchestras all over the world.



1C



This is a seating block where your eyes are roughly leveled with those of performers on the stage and accordingly you can appreciate the power and colorful notes of the music. The front row is close enough to the stage for you to almost have eye contact with the performers, enabling you to take a close look at their facial expressions and body movements. You will be able to enjoy unique experiences at MUZA because of a lower stage compared to other halls.

3C



You can hear perfectly harmonized sounds from seats in this block as they squarely face the stage. In addition, the sound reverberation from the reflector plate above the stage will make the sounds of orchestra more integrated. The seats in this block are equivalent to the front row of seats on the second floor of other halls. This is true for piano recitals as well as chamber music.

2CB



This block has seats from which you can overview the whole stage at a glance. Also, you are able to fully enjoy the harmonized sounds of the orchestra spreading out from both sides as well as the rich sounds from piano recital.

2CA



This seating block is very close to the stage, so you will be able to have a closeup view of the orchestra and listen to the precise sounds of the music. When you are attending a piano recital, you can hear the sounds spreading directly from the instrument, hence getting a feeling for their intensity and fine expressions.

2RB



The seats in this block allow you to look down on the stage from a slight angle, enabling you to see all the musical instruments of the orchestra. You can clearly hear the sounds of the wind and percussion instruments played at the stage as their sounds reach you directly. You can see the facial expressions of the pianist during the piano recital.

2LA



This seating block provides you with views of the stage from behind the violins. During a piano recital, you would see the stage from behind the pianist and therefore have a close view of the keyboards and their hand movements. Please note that it is a little difficult to view the whole stage from the back row of this block.

Google Street View ▶▶▶



Which seat is the best for hearing the pipe organ?

- You can appreciate rich sounds of the pipe organ regardless of the location of your seat.
- We recommend seats in 2CB block or above.



Reporter's advice

This guide deals with orchestras and piano recitals. A seat closer to the stage is recommended for the recitals of instruments including violins and cellos as well as for chamber music concerts because the sound volume would become a little bit lower in such recitals, etc. As for the concerts, etc. featuring a (solo) singer and/or chorus (vocal ensemble), the voices of singers will directly reach the center blocks as their face are directed straight ahead.



2P



Sitting in this block will allow you to see the whole orchestra from behind of the stage. You will feel like you are a member of the orchestra. One of the big attractions of this block is that you can look directly at the conductor while enjoying the musical performance. The notes of a piano will reverberate, because they are directed to the front seats.

4LB

The seats in this block are not recommended for those who are afraid of heights.



Like the 3RB block on the other side of the hall, this is a seating block that enjoys a panoramic view of the orchestra spread out in a fan-like form. The direct sounds from the stage will reach you after being blended with the sound reverberation from the wall, ceiling and the reflector panel. Please note that your vision of the stage will be partially blocked.

3LA

The seats in this block are not recommended for those who are afraid of heights.



In this block, you will enjoy softer sounds; a mixture of direct sounds rising from the stage and rich reverberation reflecting from the panel above the stage as well as the nearby pipes of the organ. Your vision of the stage will be partially blocked by an arm rail in front of you.

4C

The seats in this block are not recommended for those who are afraid of heights.



From this seating block, you can look down at the entire hall and stage. Although the stage is a distance away, you will still be able to experience and appreciate the beautiful music.

Translation based on the text by Atsushi Oyamada

BUY TICKET

MUZA Kawasaki Symphony Hall Ticket Center

By Telephone **+81(0)44-520-0200**
 (10:00 am-6:00 pm, closed over new years)

In Person **MUZA bldg. 4F**
 (10:00 am-7:00 pm, closed over new years)

By Email
ticket@kawasaki-sym-hall.jp
 Online ~MUZA Web Ticket~
<http://muza.pia.jp/>
 (available only in Japanese)